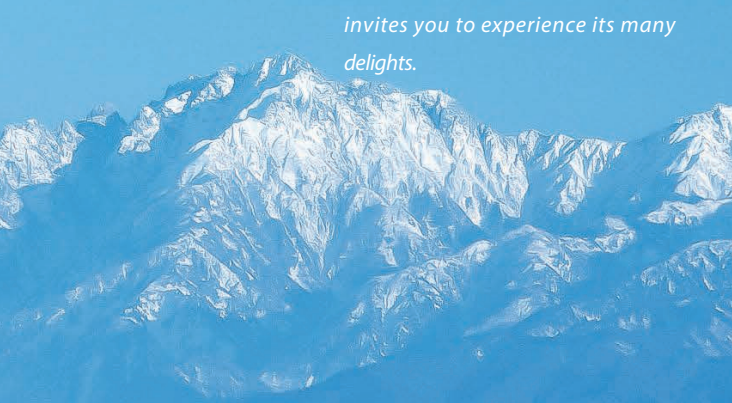
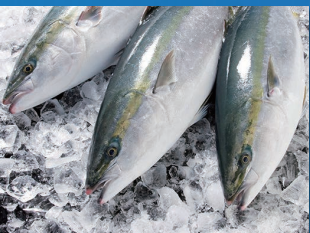


# INTRODUCTION TO TOYAMA



*Toyama is located in the Hokuriku region, facing the Sea of Japan and backed by the dramatic Tateyama Mountain Range, part of the Northern Japan Alps. The area enjoys a rich natural environment, offering spectacular views and outdoor activities year-round. The Tateyama Kurobe Alpine Route, with its famous snow corridors and the Kurobe Dam, is a must-see destination for visitors. Toyama Bay, with its deep, nutrient-rich waters, is home to over 500 species of fish, making the region a paradise for seafood lovers. Fresh local specialties such as white shrimp, firefly squid, and yellowtail are often featured in Toyama's exquisite sushi. The prefecture is also steeped in history and culture: from the gassho-style houses of Gokayama, a UNESCO World Heritage site, to the historic port town of Iwase with its Edo-period charm. With its unique blend of scenic beauty, rich culinary traditions, and cultural heritage, Toyama warmly invites you to experience its many delights.*

## CONFERENCE WEB SITE

<https://scses2026.org/>



## VENUE

The conference will be held at the Toyama International Conference Center in Toyama, Japan. It is conveniently located about 15 minutes on foot from JR Toyama Station, or 5 minutes by bus or taxi. Visitors can also take a tram and arrive directly at "Kokusai Kaigijo-mae" station in about 7 minutes. From Toyama Airport, the venue is accessible by a 25-minute airport bus ride followed by a short 2-minute walk. Toyama is situated along the Hokuriku Shinkansen line, offering easy access from major cities such as Tokyo and Kanazawa. The area surrounding the venue features scenic parks, cultural sites, and a wide range of restaurants within walking distance, providing a perfect setting to enjoy both science and the rich local hospitality of Toyama.

### Toyama International Conference Center

1-2 Ote-machi Toyama-city Toyama 930-0084

Website: <https://www.ticc.co.jp/english/>

## ACCESS

### From JR Toyama Station



- Bus** Approx. 5 minutes to "Joshi koen-mae" bus stop, and 3 minutes' walk
- Walk** Approx. 15 minutes via Joshi Oodouri street to the south
- Tram** Approx. 7 minutes to "Kokusai kaigijo-mae" station

Tokyo	2h5min	→
Osaka	2h30min	→
Nagoya	2h30min	→

**JR  
Toyama Station**

### From Toyama Airport



- Taxi** Approx. 15 minutes
- Bus [Airport Bus]** Approx. 25 minutes to "Sogawa" bus stop, and 2 minutes' walk

Seoul	1h50min	→
Taipei	2h55min	→
Dalian	2h15min	→
Shanghai	2h20min	→
Tokyo	55min	→

**Toyama  
Airport**

### From Highway



- From Toyama IC** Approx. 10 minutes
- From Toyama-west IC** Approx. 20 minutes

Tokyo	5h	→
Osaka	4h15min	→
Nagoya	3h	→

**Toyama IC**

# INTERNATIONAL CONFERENCE ON STRONGLY CORRELATED ELECTRON SYSTEMS SCES 2026



Toyama International Conference Center  
Toyama, Japan

Co-host: The Physical Society of Japan





## SCHEDULE

<b>Dec. 2025</b>	Second Announcement
<b>1 Feb. 2026</b>	Abstract Submission Site Opens
<b>1 Feb. 2026</b>	Online Registration Opens
<b>30 April 2026</b>	Abstract Submission Deadline
<b>1 June 2026</b>	Manuscript Submission Site Opens
<b>15 June 2026</b>	Abstract Acceptance Notification
<b>15 July 2026</b>	Early-Bird Registration Deadline
<b>26 Aug. 2026</b>	Late Registration Deadline
<b>20 Sep. 2026</b>	Manuscript Submission Deadline
<b>27 Sep. 2026</b>	On-site Registration Starts
<b>28 Sep. 2026</b>	Conference Begins
<b>2 Oct. 2026</b>	Conference Ends

## TOPICS [TENTATIVE]

- Heavy fermions, Kondo physics, and valence fluctuations
- Quantum phase transitions and related phenomena
- Unconventional superconductivity
- Actinide
- Frustrated magnetism and quantum spin liquids
- Skyrmions and related phenomena
- Altermagnet
- High-temperature superconductivity and metal insulator transitions
- Multiferroics and related phenomena
- Multipole order and crystal field effect
- Topological insulators and semimetals
- Two-dimensional materials
- Non-equilibrium phenomena
- Theoretical models and methods
- Materials design and novel advanced materials
- Devices and applications
- Quantum entanglement, nanoscale and mesoscopic phenomena
- Novel techniques including large research facilities

## SATELLITE MEETING

International Workshop on Unveiling, Design, and Development of Asymmetric Quantum Matters: Asymmetry 2026  
September 24 – 26, Osaka University, Osaka, Japan

Additional satellite meetings may be announced in future updates.

## INTERNATIONAL ADVISORY COMMITTEE

<b>D. Aoki</b>	(Tohoku U)	<b>M. B. Maple</b>	(San Diego)
<b>R. Arita</b>	(Tokyo)	<b>A. McCollam</b>	(Nijmegen)
<b>M. Aronson</b>	(Vancouver)	<b>E. Morosan</b>	(Rice U)
<b>E. Bauer</b>	(Vienna)	<b>N. Nagaosa</b>	(Tokyo)
<b>A. Bianchi</b>	(Montréal)	<b>S. Nakatsuji</b>	(Tokyo)
<b>A. Botana</b>	(Tempe)	<b>M. Nicklas</b>	(Dresden)
<b>M. Brando</b>	(Dresden)	<b>M. Norman</b>	(Argonne)
<b>D. Cabra</b>	(La Plata)	<b>M. Ogata</b>	(Tokyo)
<b>P. Canfield</b>	(Ames)	<b>T. Onimaru</b>	(Hiroshima)
<b>S. Chernyshev</b>	(Irvine)	<b>P. Pagliuso</b>	(Campinas)
<b>P. Coleman</b>	(Rutgers U)	<b>J.-G. Park</b>	(Seoul)
<b>M. Continentino</b>	(Rio de Janeiro)	<b>T. Park</b>	(Suwon)
<b>N. Curro</b>	(Davis)	<b>S. Paschen</b>	(Vienna)
<b>J. Custers</b>	(Prague)	<b>C. Pepin</b>	(Saclay)
<b>A. Damascelli</b>	(Vancouver)	<b>C. Petrovic</b>	(Shanghai)
<b>J. D. Denlinger</b>	(Berkeley)	<b>P. Riseborough</b>	(Philadelphia)
<b>A. de Visser</b>	(Amsterdam)	<b>F. Ronning</b>	(Los Alamos)
<b>Y. Fasano</b>	(Bariloché)	<b>P. Rosa</b>	(Los Alamos)
<b>D.-L. Feng</b>	(Shanghai)	<b>S. Rowley</b>	(Cambridge)
<b>P. Gegenwart</b>	(Augsburg)	<b>E. B. Saitovich</b>	(Rio de Janeiro)
<b>P. Giralgo-Gallo</b>	(Bogotá)	<b>J. G. Sal</b>	(Santander)
<b>L. Greene</b>	(Tallahassee)	<b>E. Sampathkumaran</b>	(TIFR Mumbai)
<b>H. Harima</b>	(Kobe)	<b>D. D. Sarma</b>	(IITSc Bangalore)
<b>D. Haskel</b>	(Argonne)	<b>S. Saxena</b>	(Cambridge)
<b>H. Ikeda</b>	(Ritsumeikan U)	<b>V. Sechovský</b>	(Prague)
<b>M. Jaime</b>	(Braunschweig)	<b>J. Sereni</b>	(Bariloché)
<b>H. Jeschke</b>	(Okayama)	<b>Q. Si</b>	(Rice U)
<b>S. Julian</b>	(Toronto)	<b>M. Sgrist</b>	(Zurich)
<b>M.-H. Jung</b>	(Sogang U)	<b>A. Strydom</b>	(Johannesburg)
<b>D. Kaczorowski</b>	(Warsaw)	<b>S. Süllow</b>	(Braunschweig)
<b>K. Kanoda</b>	(Tokyo)	<b>L. Taillefer</b>	(Sherbrooke)
<b>Y.-J. Kao</b>	(Taipei)	<b>J. Thompson</b>	(Los Alamos)
<b>H.-Y. Kee</b>	(Toronto)	<b>Y. Tokura</b>	(Tokyo)
<b>K. Kim</b>	(Seoul)	<b>H.-H. Wen</b>	(Nanjing)
<b>G. Knebel</b>	(Grenoble)	<b>S. Wirth</b>	(Dresden)
<b>G. Kotliar</b>	(Rutgers U)	<b>T. Xiang</b>	(Beijing)
<b>H. von Löhneysen</b>	(Karlsruhe)	<b>J. Yu</b>	(Seoul)
<b>Y. Maeno</b>	(Kyoto)	<b>H. Yuan</b>	(Zhejiang)

## SCOPE

This conference is part of the long-standing SCES series, with past meetings held in:

**Sendai** ('92), **San Diego** ('93), **Amsterdam** ('94), **Goa** ('95), **Zurich** ('96), **Paris** ('98), **Nagano** ('99), **Ann Arbor** ('01), **Krakow** ('02), **Karlsruhe** ('04), **Vienna** ('05), **Houston** ('07), **Buzios** ('08), **Santa Fe** ('10), **Cambridge** ('11), **Tokyo** ('13), **Grenoble** ('14), **Hangzhou** ('16), **Prague** ('17), **Okayama** ('19), **Garuja** ('21), **Amsterdam** ('22), **Incheon** ('23), and **Montréal** ('25).

Every three years since 1997, SCES has also been integrated into the triennial International Conference on Magnetism (ICM), held in: **Cairns** ('97), **Recife** ('00), **Rome** ('03), **Kyoto** ('06), **Karlsruhe** ('09), **Busan** ('12), **Barcelona** ('15), **San Francisco** ('18), and **Bologna** ('24).

## PROCEEDINGS

All accepted papers are planned to be published in a volume of the open-access journal JPS Conference Proceedings, published by the Physical Society of Japan.  
<https://journals.jps.jp/>

## ORGANIZING COMMITTEE

Co-chair	<b>Kenji Ishida</b>	Kyoto University, Kyoto, Japan
Co-chair	<b>Takami Tohyama</b>	Tokyo University of Science, Tokyo, Japan
Chair of Local Committee	<b>Yuji Muro</b>	Toyama Prefectural University, Toyama, Japan
Chair of Program Committee	<b>Dai Aoki</b>	Tohoku University, Sendai, Japan
	<b>Kyoko Ishizaka</b>	University of Tokyo, Tokyo, Japan
	<b>Yuki Kawaguchi</b>	Nagoya University, Nagoya, Japan
	<b>Yukitoshi Motome</b>	University of Tokyo, Tokyo, Japan
	<b>Takahiro Onimaru</b>	Hiroshima University, Hiroshima, Japan
Chair of Publication Committee	<b>Miho Nakajima</b>	Shinshu University, Nagano, Japan
	<b>Kenya Ohgushi</b>	Tohoku University, Sendai, Japan
	<b>Hitoshi Seo</b>	RIKEN, Wako, Japan
Treasurer	<b>Hiroshi Amitsuka</b>	Hokkaido University, Sapporo, Japan
	<b>Kaya Kobayashi</b>	Hokkaido University, Sapporo, Japan
Local Committee	<b>Keisuke Mitsumoto</b>	Toyama Prefectural University
	<b>Tomohiko Kuwai</b>	University of Toyama
	<b>Tadashi Fukuhara</b>	Toyama Prefectural University
	<b>Hiroshi Tanida</b>	Toyama Prefectural University
	<b>Takemi Yamada</b>	Toyama Prefectural University
	<b>Yuki Yanagi</b>	Toyama Prefectural University
	<b>Takahiro Namiki</b>	University of Toyama

## REGISTRATION

	Early-Bird	Late	On-Site
Standard	¥80,000	¥90,000	¥95,000
Student/Retired	¥30,000	¥35,000	¥40,000
Accompanying Person	¥10,000	¥10,000	¥10,000

## REGISTRATION DESK

Toyama International Conference Center, 1st-Floor Lobby

## WELCOME RECEPTION

**Date:** 27 September 2026

**Venue:** ANA Crowne Plaza Hotel Toyama, 3rd-Floor OTORI  
(<https://www.anacrowneplaza-toyama.jp/>)

## BANQUET

**Date:** 30 September 2026

**Venue:** ANA Crowne Plaza Hotel Toyama, 3rd-Floor OTORI & ASUKA

**Fee:** ¥12,000 (tentative)

(Banquet fee is not included in conference registration.)